



 **Faith Protocol**

# SEED CLOUD MINING

LET'S UNLOCK WEB 3.0 GROWTH POTENTIAL

[WWW.FAITHFARMING.COM](http://WWW.FAITHFARMING.COM)





# What Is Faith Protocol?

Faith Protocol Is One Of The Largest Ecosystems In The Crypto & Blockchain World, With Web3 Projects In Development Since 2018 And Officially Launched In 2023. The Protocol Represents A Comprehensive Blockchain Platform With Multiple Interconnected Projects.

## Our Projects:

[WWW.FAITHPROTOCOL.COM](http://WWW.FAITHPROTOCOL.COM)[WWW.FAITHPROTOCOL.IO](http://WWW.FAITHPROTOCOL.IO)[WWW.FAITHMETA.LAND](http://WWW.FAITHMETA.LAND)[WWW.FAITHFARMING.COM](http://WWW.FAITHFARMING.COM)[WWW.FAITHDEX.IO](http://WWW.FAITHDEX.IO)[WWW.FAITHWALLET.IO](http://WWW.FAITHWALLET.IO)

## Coming Soon

[WWW.FAITHGAME.IO](http://WWW.FAITHGAME.IO)[WWW.FAITHMETAVERSE.IO](http://WWW.FAITHMETAVERSE.IO)[WWW.FAITHSCAN.IO](http://WWW.FAITHSCAN.IO)[WWW.FAITHMETAMEET.COM](http://WWW.FAITHMETAMEET.COM)[WWW.FAITHCOIN.IO](http://WWW.FAITHCOIN.IO)



# Our Project Evolution

Over The Past Three Years, Faith Protocol Has Successfully Developed Revolutionary Projects And Beta Version Are Live.  
**Now, We're Introducing Faith Cloud Mining.** An Easy Way To Get Started With Crypto Mining.

## Faith Metaverse



## Faith Token



## Faith Farming Land



## Faith Wallet



## Faith DEX



## Faith Meta Cards



## Faith Virtual Land



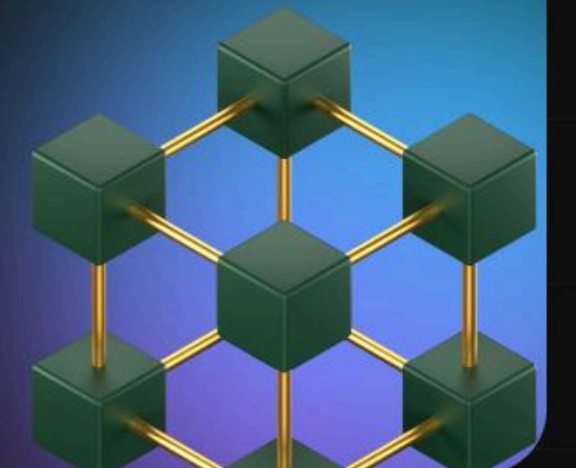
## Faith Education



## Faith Meta Meet



## Faith Blockchain (Coming Soon)





# What Is Faith Virtual Land

Faith Virtual Land Is A New Revolutionary Invention In The Metaverse. Virtual Land Is A Digital Property Within A Metaverse Or Blockchain-Based Platform. It Exists As A Blockchain-Based Virtual Asset And Can Be Bought, Sold, Or Developed For Various Purposes, Such As Gaming, Business, Cloud Farming, Or Social Interactions. Owners Can Build, Trade, Land Tenure & Seed Farming, Or Monetize Their Land, Creating Real-World Value In A Digital Ecosystem.



## Digital Ownership

- Virtual Land Is Secured By Blockchain, Ensuring Transparent And Verified Ownership.



## Monetization Potential

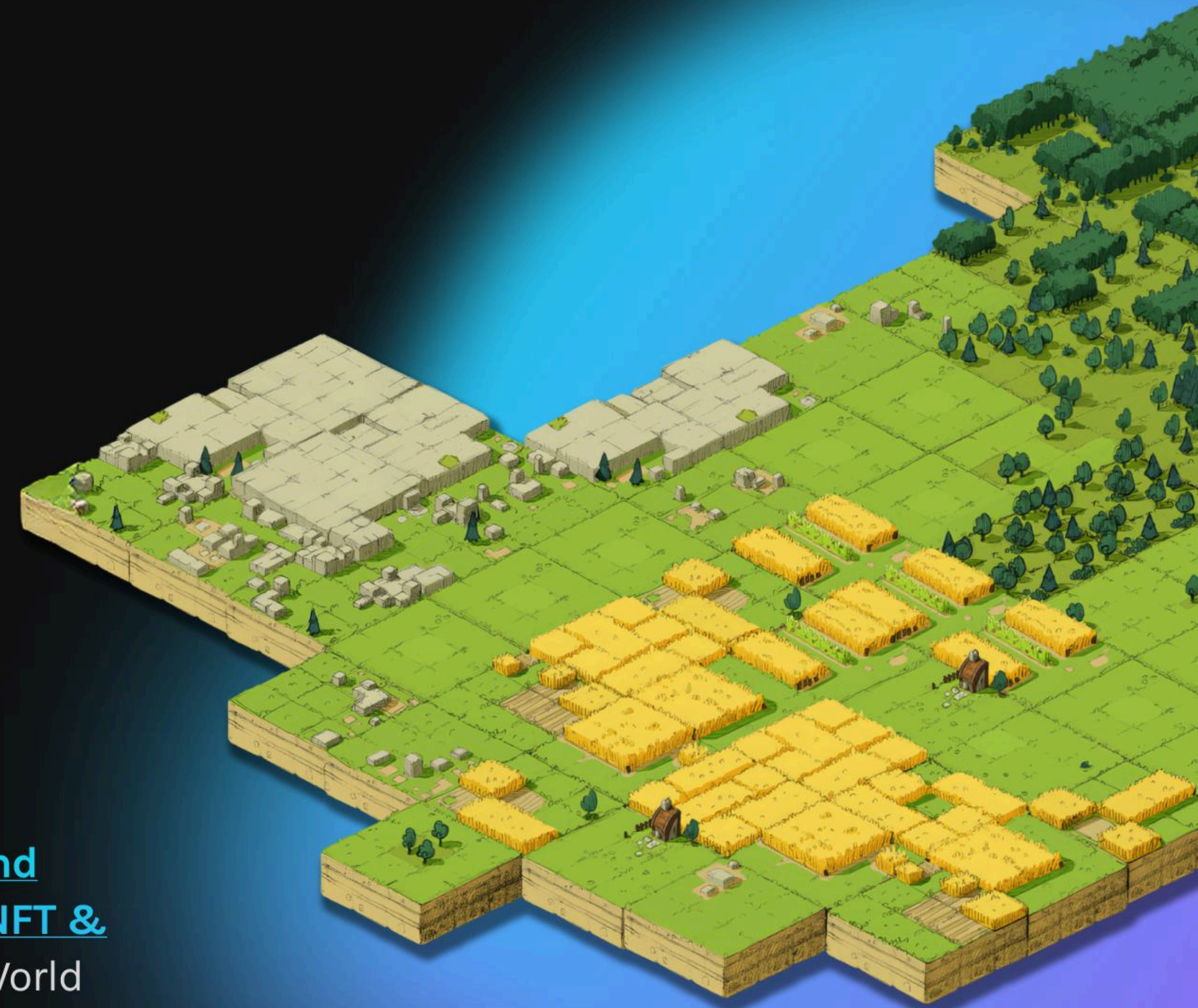
- Owners Can Trade, Develop, Farm Or Earn Through Various Platform-Driven Opportunities.





# Must Know why Faith's Virtual Land Different ?

Faith Virtual Land Is [3D, Augmented Reality \(AR\), Virtual Reality \(VR\), And Artificial Intelligence \(AI\), XR\(Extended Reality\), MR\(Mixed Reality\), ANFT & Blockchain Technology Based Virtual Digital Property](#) Within A Virtual World Or Metaverse Platform Like [Faith Meta Land](#) Or [Faith Farming](#). This Land Is Represented As Digital Assets On A Blockchain, Allowing Users To [Buy, Sell, Rent, Trade, Farming, Harvesting](#) Or Develop The Property In Various Virtual Environments. Virtual Land Can Be Used For A Variety Of Purposes, Such As Virtual Commerce, Marketing, Cloud Mining, Building Virtual Homes, Businesses, Or Participating In Virtual Events.



[WWW.FAITHFARMING.COM](http://WWW.FAITHFARMING.COM)



# What Is Faith Farming

Faith Farming Is A Decentralised, Blockchain-Based Ecosystem That Allows Users To Buy, Sell, Trade, Farm, Lease, Seed, Assets, NFT & ANFT Use, And Trade Virtual Land Parcels. The Goal Is To Participate In The Growth Of A Virtual Economy Where Land Ownership, Farming, And Asset Creation Are Key Components.

## Key Concepts:



### Virtual Land Ownership

Buy, Sell, Lease, Seed, & Trade In Parcels.



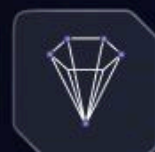
### Asset Creation & Trading

Create Valuable Assets That Can Be Traded Within The Ecosystem.



### Farming

Grow Or Develop Assets On Your Land (Houses, Crops, Animals, & Assets).



### Staged Land Release

Land Is Sold In Phases, Increasing In Price As Demand Grows.





# Benefits Of Faith Farming

Faith Farming Only Have **9,990 Exclusive** Virtual Land Parcels With Immense Price Growth Potential. Users Can Trade, Farm, Create Assets, And Engage In Blockchain-Powered Activities Like NFT & ANFT Creation And Cloud Mining.



## Benefits of Faith Farming

Step 1



Buy Land

Step 2



Lease Your Lands

Step 3



Cloud farming

Step 4



Trade Lands, Create NFTs & ANFTs And Grow Your Assets.



# FAITH CLOUD SEED FARMING



## START WITH LAND



## START WITHOUT LAND







[WWW.FAITHFARMING.COM](http://WWW.FAITHFARMING.COM)

# What is Seed Farming?

Faith seed farming algorithm combining these three components (cloud mining, node validation, and trading bots), the Faith Farming system provides users with a comprehensive approach to earning rewards.

## How it works:



You purchase virtual land.



You invest in seeds.



Your seeds are locked for 11 months.



You receive minimum 9% monthly Rewards

This model operates like a fixed deposit but offers significantly better returns, all driven by the faith Protocol Ecosystem algorithm.





# Get Daily profit in Seed farming



Choose Your Seeds From Four Seed Investment Options, Each Offering Increasing Returns Over Time:

Bit Seed



**TIMELINE - 1 TO 3 MONTHS**

Byte Seed



**TIMELINE - 2 TO 6 MONTHS**

Block Seed



**TIMELINE - 5 TO 12 MONTHS**

Hybrid Seed



**TIMELINE - 11 TO 24 MONTHS**



# What is Faith Seed Cloud Farming Algorithm

## Mining, Node & Trading Bot Algorithm (Cloud mining & combination of trading Bot)

Faith Farming Algorithm combines several elements to enhance the process of crypto mining and trading:



### Mining Algorithm

Focuses on cloud mining, where users stake digital assets to earn mining rewards.



### Node Algorithm

Involves validators in the ecosystem who validate transactions and add new blocks to the blockchain.



### Trading Bot Algorithm

Automates the buying and selling of cryptocurrencies to optimize trading profits.

By combining these three components (cloud mining, node validation, and trading bots), the Faith Farming system provides users with a comprehensive approach to earning crypto rewards.



# How to start faith cloud mining



## OPTION 1 With Virtual Land

<b>STEP 1</b>	Purchase Virtual Land From <a href="https://Faithfarming.Com">Faithfarming.Com</a> Where You Can Buy, Sell, Rent 36% APY & Trade.
<b>STEP 2</b>	Start Seed Farming As First Owner With <b>USDT/FAITH</b> Earn 5% Extra On Every Farming And 5% To Your Land Sponsor.
<b>STEP 3</b>	SELF - Claim Mining Rewards On A Daily Basis. Monthly Minimum 9%
<b>STEP 4</b>	After 11 Months Unstake 100% Value In Digital Asset In Form Of Crypto Coin.



## OPTION 2 Without Virtual Land

<b>STEP 1</b>	Start With Minimum 10\$ Seeds With <b>USDT/FAITH</b> And Begin Your Cloud Farming And Stake Your Assets.
<b>STEP 2</b>	SELF - Claim Mining Rewards On A Daily Basis. Monthly Minimum 9%
<b>STEP 3</b>	After 11 Months Unstake 100% Value In Digital Asset In Form Of Crypto Coin.

\*Either You Can Farm On Land Or Put Land On Rent



# Seed Farming Benefits

Referral And Bonus Income Is An Integral Part Of Faith Farming Land's Growth Model By Inviting Others

## MINING REWARDS:



**Self-Mining Rewards: Minimum 9% Monthly, Claimable Daily.**



**Stack And Queue Mining Rewards: From Upto 11 Levels , Claimable Daily.**



**Extra Blockchain Mining Rewards.**

## BONUS REWARDS:



**Get Instant 10% Referring Bonus.**



**Team Bonus Rewards: 1% Per Level Up To 11 Levels, Released 1%. On Daily Basis**



**Get Lucky Spin All Active User**

Example: You Refer User A For Direct, Who Refers User B, Who Refers User C. You Earn Bonuses From All 11 Levels.



# Seed Farming Returns

Faith Farming Offers One Of The Most Competitive Mining Rewards Structures:

Monthly Minimum Reward

**9%**

Lock-in Period

**11 Months**

Hybrid Seed - 11 Month to 24 Month

Total Return

**199%**

Over The Full Mining Period

Example: **Minimum Start With \$10**



Invested In Seeds

**\$500**



Minimum Earned Monthly

**\$45**



Total After 11 Months

**\$995**

Advantage: **This Return Is In Addition To Any Appreciation In Faith Land Value.**

[WWW.FAITHFARMING.COM](http://WWW.FAITHFARMING.COM)





[WWW.FAITHFARMING.COM](http://WWW.FAITHFARMING.COM)

# Referral Bonus

# 10%

## Direct Referral Bonus

You will earn a 10% bonus instantly whenever someone joins through your referral and makes a purchase seed investment.



# Team Bonus

Team Bonus Rewards

# 1%

## How It's Works

- You Earn 1% From Each Level Of Your Team, From 2nd Level To 11th Level Deep.
- This Bonus Is Released Daily At A Rate Of 1% Per Day.







# Stack and Queue Mining Rewards



**Get Automatic Stack And Queue Structure Up To 11 Levels (Only Active Users)**



**Earn 1% Bonus From Each Level**



**Bonus Is Auto-Invested In Seed Farming**



**Get 9% Monthly Mining Rewards, Claimed Daily**







# Seed Cloud Mining Exclusive Offers

Stay Active, Keep Farming, Spin And Win Exciting Rewards!

Offer Valid For First **10,000** Active Users

[WWW.FAITHFARMING.COM](http://WWW.FAITHFARMING.COM)





# BLOCKCHAIN NODE MINING

LAUNCHING SOON





# Total Faith Farming Land 9990



**Phase 1 : 500 Lands (Price Growth 200%)**



**Phase 2 : 1000 Lands (Price Growth 400%)**



**Phase 3 : 3000 Lands (Price Growth 800%)**



**Phase 4 : 5490 Lands (Price Growth 1600%)**



## Step 01

### Buy Land

- Mint Land, Buy, Sell, Rent & Trade Profit

## Step 02

### Lease & Trade your Lands

- Rent Your Land Monthly Returns (36% APY)

## Step 03

### Cloud Farming- Highest Rewards Timeline

- Bit Seed 1months-3Months
- Byte Seed- 2month To 6months
- Block Seed - 5 Month To 12 Month
- Hybrid Seed - 11 Month To 24 Month

## Step 04

### Update Assets Create NFTs & ANFTs

- Assets And NFTs Trade Profit
- Build Assets Like Houses, Animal, Machineries And Tools



# Land Parcel Phases Breakdown



Total Land Supply Only **9990** Parcels.

Price Increases After Every Land Purchase/Sale.



Phase 1 : **500 Lands (Price Growth 200%)**

**40% Non-Transferable**

- 200 Parcels

**Land Price Fix**

- \$50

**60% Transferable**

- 300 Parcels

**Land Price Fix**

- \$100



Phase 2 : **1000 Lands (Price Growth 400%)**

**40% Non-Transferable**

- 400 Parcels

**Land Price Fix**

- \$100

**60% Transferable**

- 600 Parcels

**Land Price Fix**

- \$200



# Land Parcel Phases Breakdown



**Land Trading Is Now Open.** Trade Based On Profit.

Price Increases After Every Land Purchase/Sale.



**Phase 3 : 3000 (Price Growth: 800%) – Land Trading Begins**

**40% Non-Transferable**

- 1200 Parcels

**Land Price**

- \$200

**60% Transferable**

- 1800 Parcels

**Land Price**

- \$400



**Phase 4 : 5490 Lands (Price Growth 1600%)**

**40% Non-Transferable**

- 2196 Parcels

**Land Price**

- \$400

**60% Transferable**

- 3294 Parcels

**Land Price**

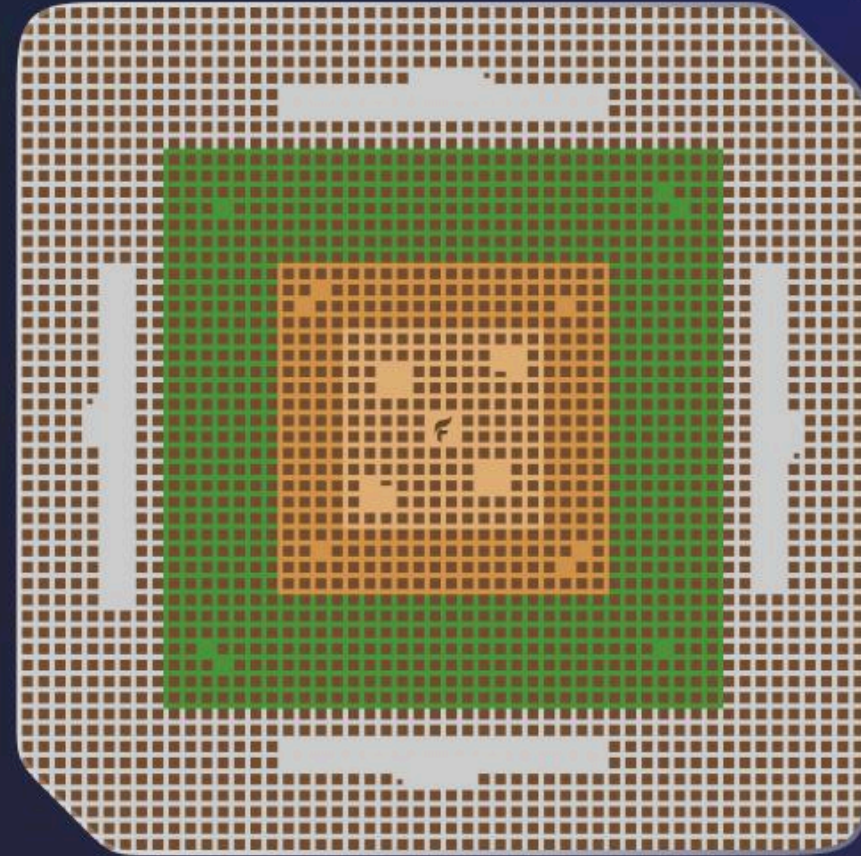
- \$800



# How To Buy Land In Faith Farming

## LAND MAP INTERFACE

- The Land Map Shows Which Parcels Are Available To Buy Based On Their Transferability.



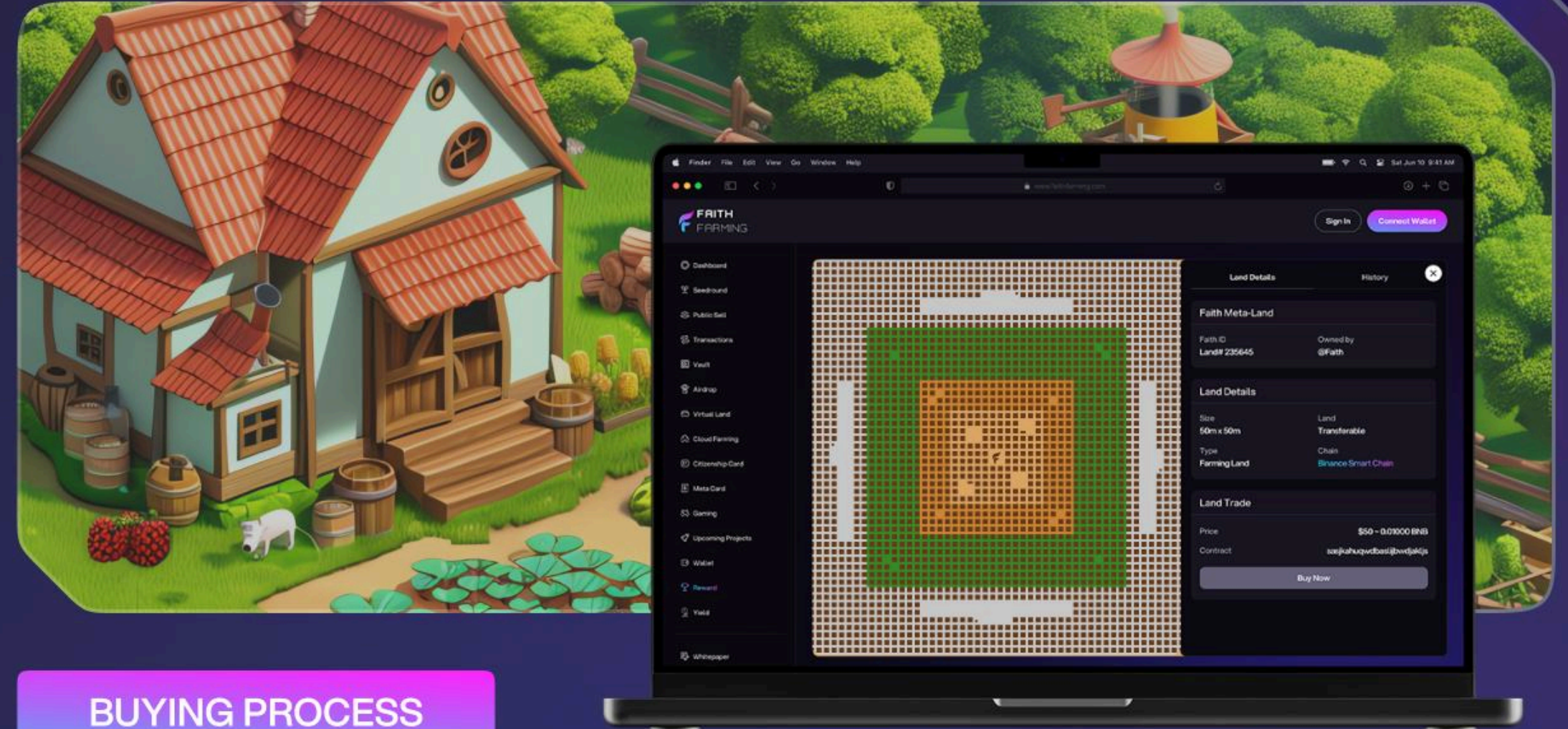
## PRICE DYNAMICS

### Non-Transferable

- \$50 Per Parcel Initially.

### Transferable

- \$100 Per Parcel Initially.



## BUYING PROCESS

### Step 1

#### Select Land Type

- Choose Between **Non-Transferable** Or **Transferable**.

### Step 3

#### Choose Currency

- Pay With **USDT, BNB Or FAITH**.

### Step 2

#### Enter Your Refer Address

- Enter The Wallet Address Of Your Referral.

### Step 4

#### Execute Transaction

- The Purchase Is Confirmed Via A **Smart Contract**.



# Land Tenure & Rental Income

## Earn 36% Annual Returns On Land Rent

Rent Your Virtual Land And Generate Monthly Passive Income With A 36% Yearly Return.

### How It Works

- Rent Out Land – Secure Ongoing Earnings.
- Receive Monthly Profits – Steady Payouts From Tenure.
- Opportunity For Fix Income In The Faith Farming Land.





# The Core Components Of Faith Farming

## Mint Land - Sell Profit

### ✦ Digital Ownership

Your Land Is Secured On The Blockchain, Ensuring Transparency.

### ✦ Value Appreciation

As Demand Grows, Land Prices Increase, Benefiting Investors.



## Token - Growth Profit

### ✦ Faith Token Total Supply 36936969

### ✦ Soul Bound Token

Who Mints The Land Hold The Soul Bound Token Permanently To Their Address. And It's Your Special Identity.

### ✦ Currency Options

USDT, BNB, And FAITH Token Can Be Used To Buy Land And Assets.



## Land Rent Monthly Profit

Rent Your Land & Get Monthly Returns.

## Seed Farming - Daily Profit

### ✦ Diverse Crops

Choose From Multiple Seeds To Cultivate Different Digital Crops.

### ✦ Growth Opportunities

Certain Seeds May Provide Higher Rewards Based On Farming Strategy.



## Assets & Animal - Trade Profit

### ✦ Livestock Animals

Can Add Animals & It Contribute To Farm Growth And Additional Rewards.

### ✦ Custom Development

Build Structure Like Houses, Animals, Assets, Machineries And Tools.





# The First Referral Count As A Permanent Referral For Every Trade.

9990 Lands = 9990 Refers Only

Earn 10% Profit On The First Land Sale And 5% Profit On Every Trade & Farming Made On Your Referral Land.  
The First Land Owner Also Gets A 5% Lifetime Profit On Every Trade Made On The Minted Land.

Type Of Earning	Permanent Referral	First Landowner
Land Sale	10% Of First Land Sale	Price Appriciation
Every Land Trade	5% Lifetime	5% Lifetime
Every Farming	5% Lifetime	5% Lifetime

Rent Your Land Monthly Returns (36% APY)





# GET TRADE PROFIT ON EVERY MINUTE IN FAITH NFT & ANFT



Faith Farming Offers A Limited Supply Of NFTs And ANFTs For Animals And Assets, Providing Multiple Ways To Earn And Grow Within The Ecosystem For Both Landowners And Non-Landowners.



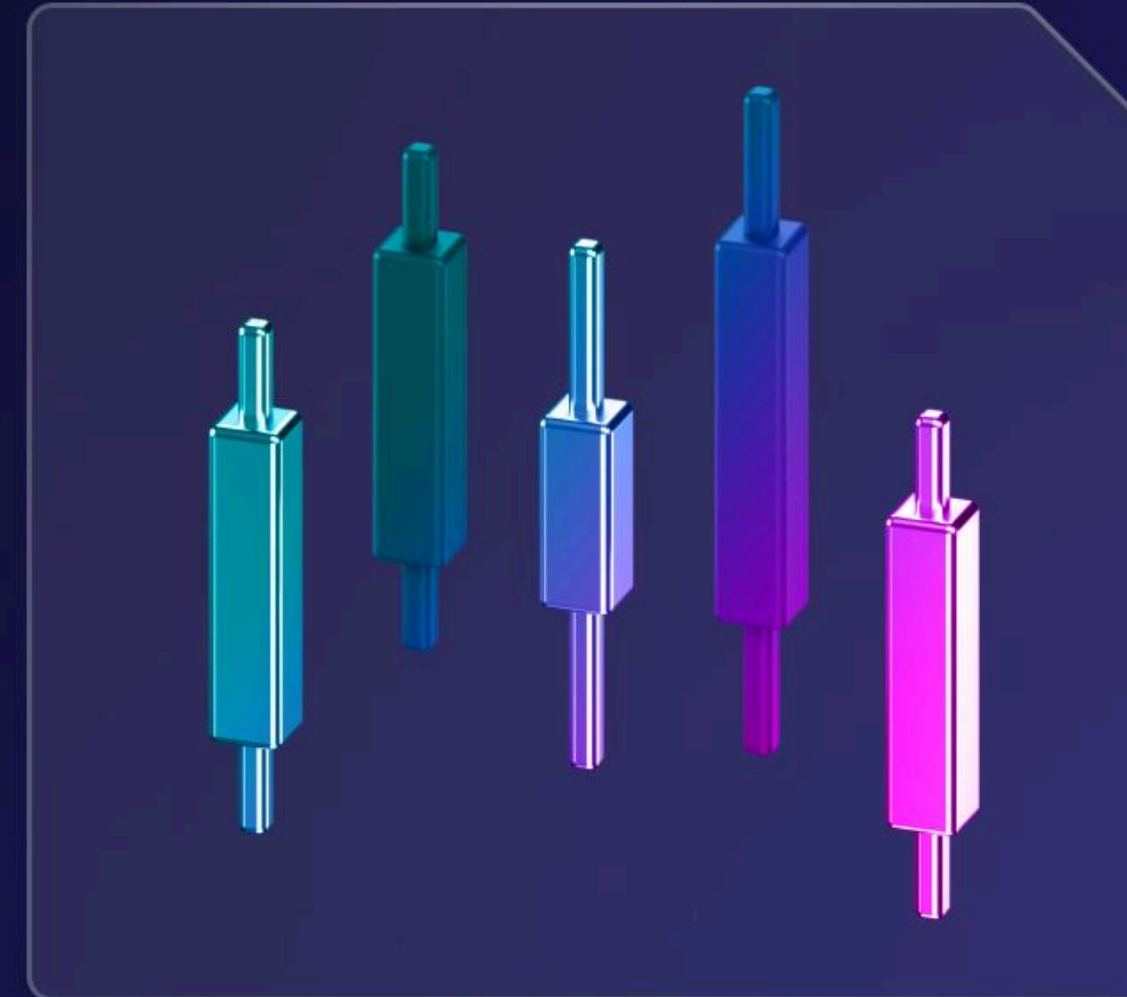
## Mint

Create Unique NFTs & ANFTs For Digital Assets.



## Stake

Earn Rewards By Staking NFTs & ANFTs Without Owning Land.



## Trade

Buy NFTs & ANFTs At A Lower Price And Sell Them Later For A Profit.



## Future Use

Hold NFTs & ANFTs Now And Utilize Them When Acquiring Land Later.

**Faith Marketplace Enables Users To Mint, Stake, Trade, And Maximize Their Digital Assets, Ensuring Long-Term Value Appreciation.**



# Seed Farming Power = 10x of Current Land Value

For instance

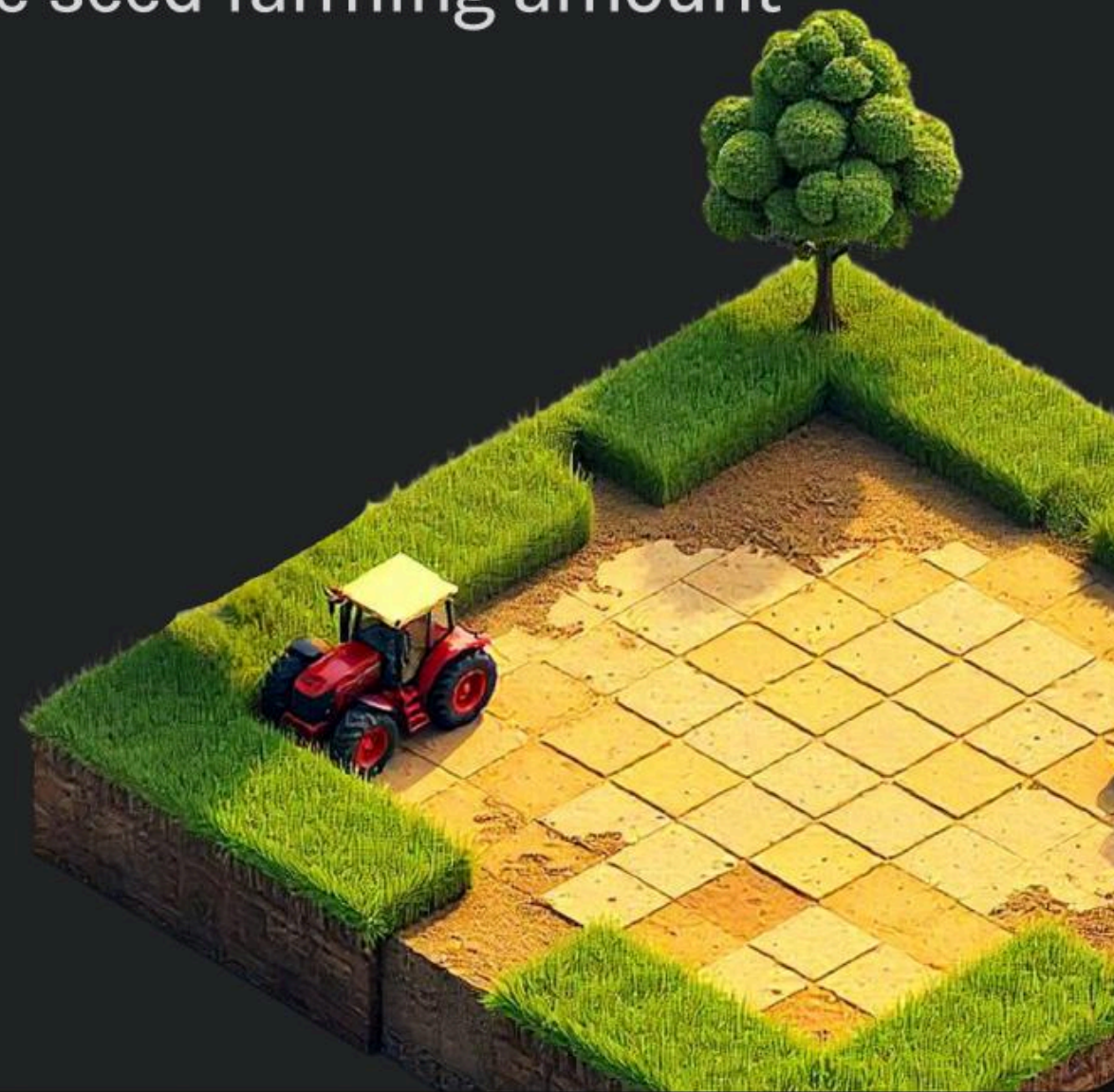
**\$400**

Land value



**\$4,000 (10x)**

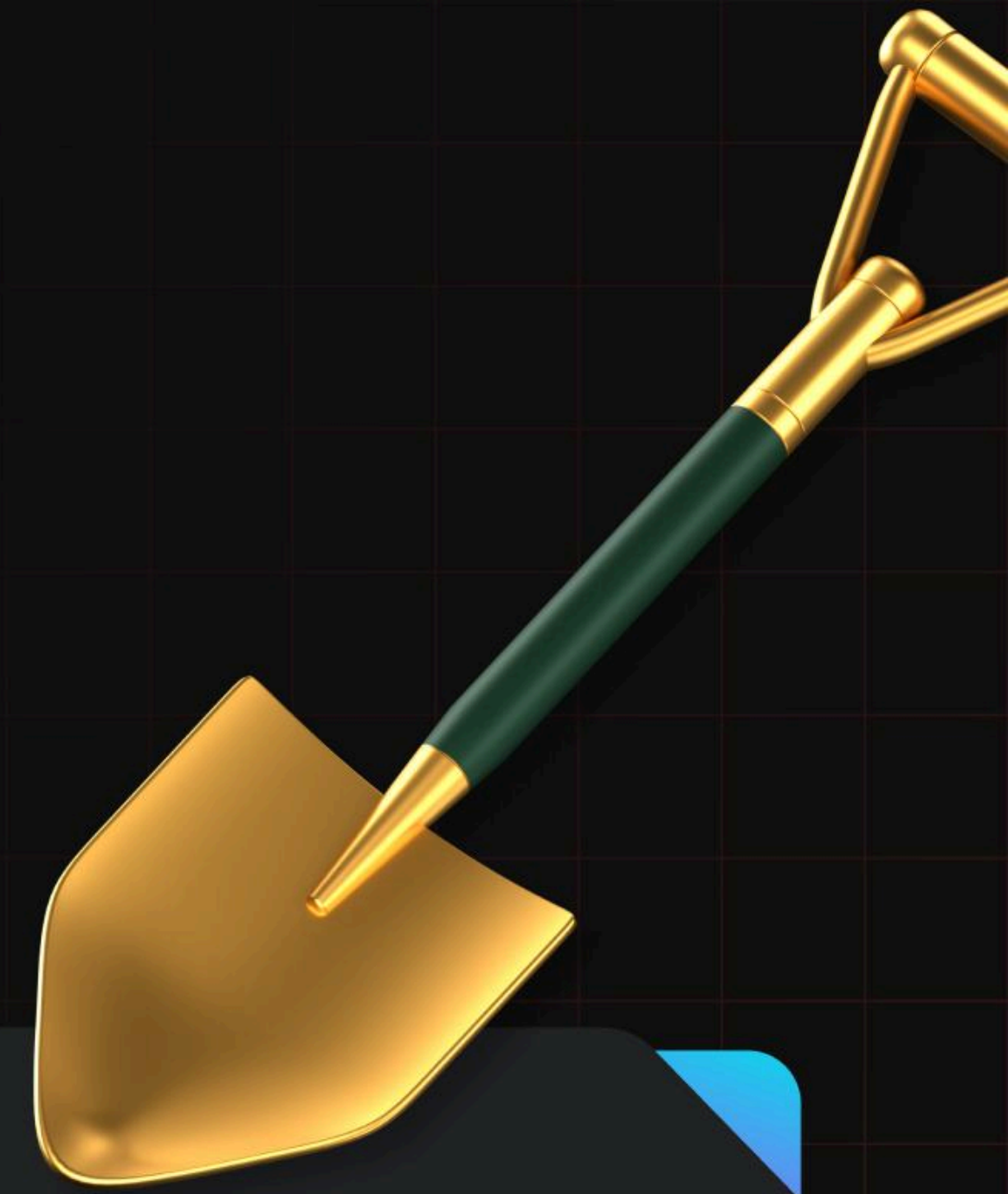
Eligible seed farming amount



**\$360**

**(9% of \$4,000)**

Monthly income from farming







[WWW.FAITHFARMING.COM](http://WWW.FAITHFARMING.COM)

# Land Value: Market Driven, Not Fixed

The value of land on Faith Farming Land is dynamic. It changes with:



## Demand

As more people start farming, demand increases.



## Supply

With limited land availability, prices rise over time.

For example, if you buy land at \$150 and, due to market movement, the land's value rises to \$300, your seed farming capacity increases accordingly. You can now farm seeds worth \$3,000 (10x \$300). This directly improves your earning potential without any additional effort.

Early adoption gives you better land prices and more farming potential.





# Trade Freely on Faith DEX

Buy, Sell & Swap Faith Token Without Limits — Fast, Secure,  
And Decentralized.



[WWW.FAITHDEX.IO](http://WWW.FAITHDEX.IO)





# Web3 Faith Wallet Fully Decentralized

Store, Send, Swap  
All-In-One Secure Crypto Wallet. Full Control.







[WWW.FAITHFARMING.COM](http://WWW.FAITHFARMING.COM)

# THANK YOU



## ECOSYSTEM



[www.falthprotocol.io](http://www.falthprotocol.io)

[www.falthmeta.land](http://www.falthmeta.land)

[www.falthprotocol.com](http://www.falthprotocol.com)